

Manipulating shared folders

In this section you'll learn the basics of share management: creating, configuring and deleting shares, accessing them, and how to interpret the files you see in a share.

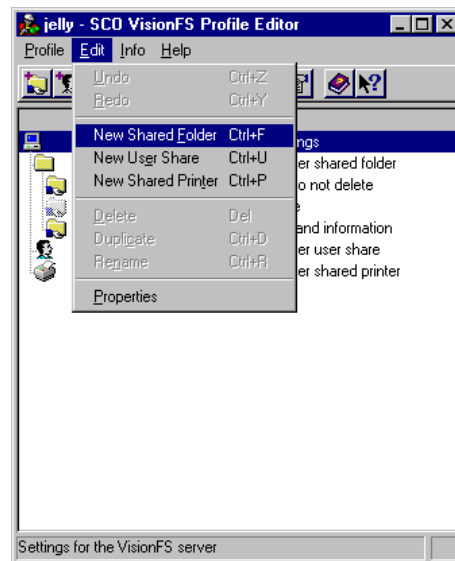
Creating a shared folder

Now you'll use the VisionFS Profile Editor to create your first share: a shared folder, giving access to a UNIX directory. First we'll take you through the process step by step, pointing out how the Profile Editor can help you before you make a mistake. Finally, we'll summarize the procedure.

Starting off

Start the Profile Editor, as described earlier in this chapter.

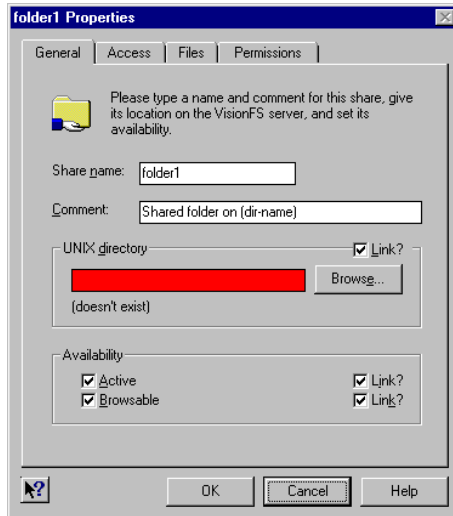
On the Edit menu, click New Shared Folder. Or click the New Shared Folder button  on the toolbar.



In the Profile tree, a shared folder called **folder1** appears. The Profile Editor shows properties for the shared folder automatically.

The General tab

Before making any changes, take a look at the General tab.



The first thing you might spot is the UNIX Directory box in red. This is the Profile Editor's way of indicating a problem with a setting—in this case, there's no directory in the text box. Before you can add the share, you must fill in a directory name.

Also, below the text box there's a line saying "(doesn't exist)". This is because the current contents of the box don't correspond to a UNIX directory that exists. As you type a directory, the Profile Editor will check silently; the line disappears when you've typed a directory name that exists on the host.

Many different settings give the same helpful indication and feedback:

- If you see a setting turn red and you don't know why, click OK and the Profile Editor will explain how to fix the problem.
- If you see a comment in parentheses beside a setting, or the setting turns yellow, it's the Profile Editor giving instant feedback. It doesn't mean the setting's invalid; just that you might want to think twice before using it.

Filling in the details

First, we'll name the shared folder. Next to Share Name, type **temp**. People use this name to access the share, so you'll probably want to make the name descriptive.

Notice how, as you delete the text **folder1**, the box turns red; this is to remind you that shares must have a name.

SEE ALSO

“Browse lists”, in the Help index.

Next to Comment, type **Temporary files**. Windows shows comments in browse lists, and when you use Details view in folders.

Next to UNIX Directory, type **/tmp**. This is the UNIX directory you're giving people access to. As you type the first character, the box stops being red to show the setting's valid.

Also, you'll see that as you type each character, the “(doesn't exist)” line and yellow coloring may appear or disappear. Assuming there's a **/tmp** directory on your UNIX host, the feedback line should disappear when you finish typing.

You can type directories that don't exist, but you'll need to create the directory on the UNIX host before people can see and access the shared folder.

Lastly, notice how the directory you've just typed appears in blue, and the Link box clears. We'll explain blue settings and links later in this book. For now, don't worry—these aren't errors.

SEE ALSO

“Browsing UNIX directories”, in the Help index.

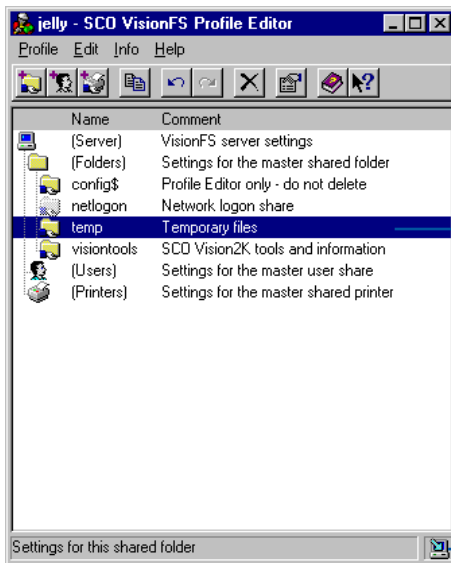
You don't have to remember and type in directory names. If you want, you can click Browse and search for a UNIX directory. Bear in mind that if the UNIX host uses NFS to mount remote UNIX directories in /, it may take a few moments for a directory listing of / to appear.

For normal shared folders, you can leave all the other settings as their defaults. Click OK to use these settings.

SEE ALSO

You can get Help on an item by clicking the question mark button, then clicking the item.

Making the shared folder available



The Profile tree shows your new shared folder.


The Profile Modified icon indicates a change that can take effect immediately.

At the moment, the server doesn't know about the new shared folder. To let people use it, click Update Server on the Profile menu. The Profile Modified icon will disappear.

Summary

In summary, here's how you create a new shared folder.

To create a new shared folder

- 1 In the Profile Editor, click New Shared Folder on the Edit menu. Or click the New Shared Folder button  on the toolbar.

Your new share is shown in the Profile tree, and the shared folder properties dialog is displayed.

- 2 Type a name, comment and UNIX directory for the share.
- 3 Change any other properties you want.
- 4 Click OK.
- 5 On the Profile menu, click Update Server.

Accessing a shared folder

SEE ALSO

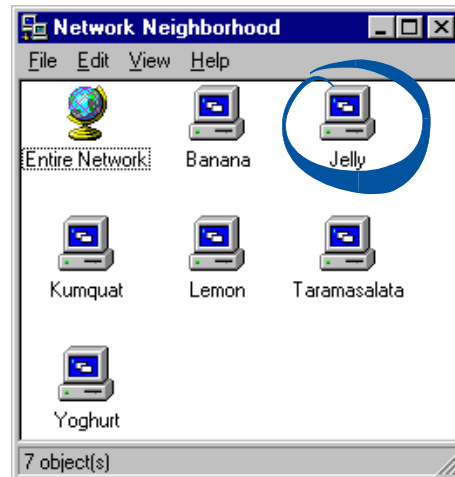
“Finding and starting the Profile Editor”, earlier in this chapter.

Now you’ve created a shared folder, you’ll want to make sure you can use it. Accessing a shared folder you’ve created is very similar to accessing the **visiontools** share, described earlier.

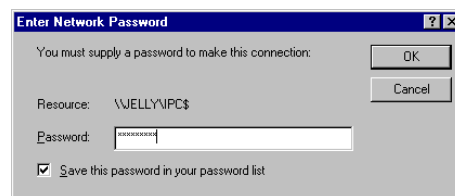
Windows users will recognize the steps: they’re exactly the same steps you use to access shares on other Windows PCs. In fact, any method you use to access other Windows PCs can be used to access a VisionFS server.

To access a shared folder using Network Neighborhood

- 1 Open Network Neighborhood (or in Windows 2000, My Network Places) and locate the VisionFS server. You may need to open Entire Network and look for the workgroup it’s in.



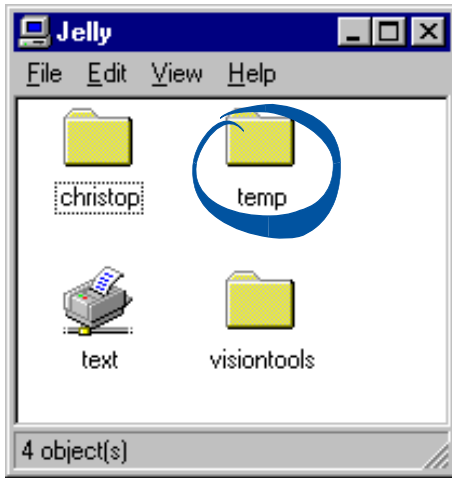
- 2 Double-click the VisionFS server.



- 3 If prompted, type your password for this server.

SEE ALSO

“Passwords and authentication”, in Chapter 2, “Beyond the Basics”.



- 4 Double-click the shared folder.

TIP

Use shortcuts to give access to frequently used shares, and files within shares.



- If you're allowed access to the share, you'll see the files and directories it contains.